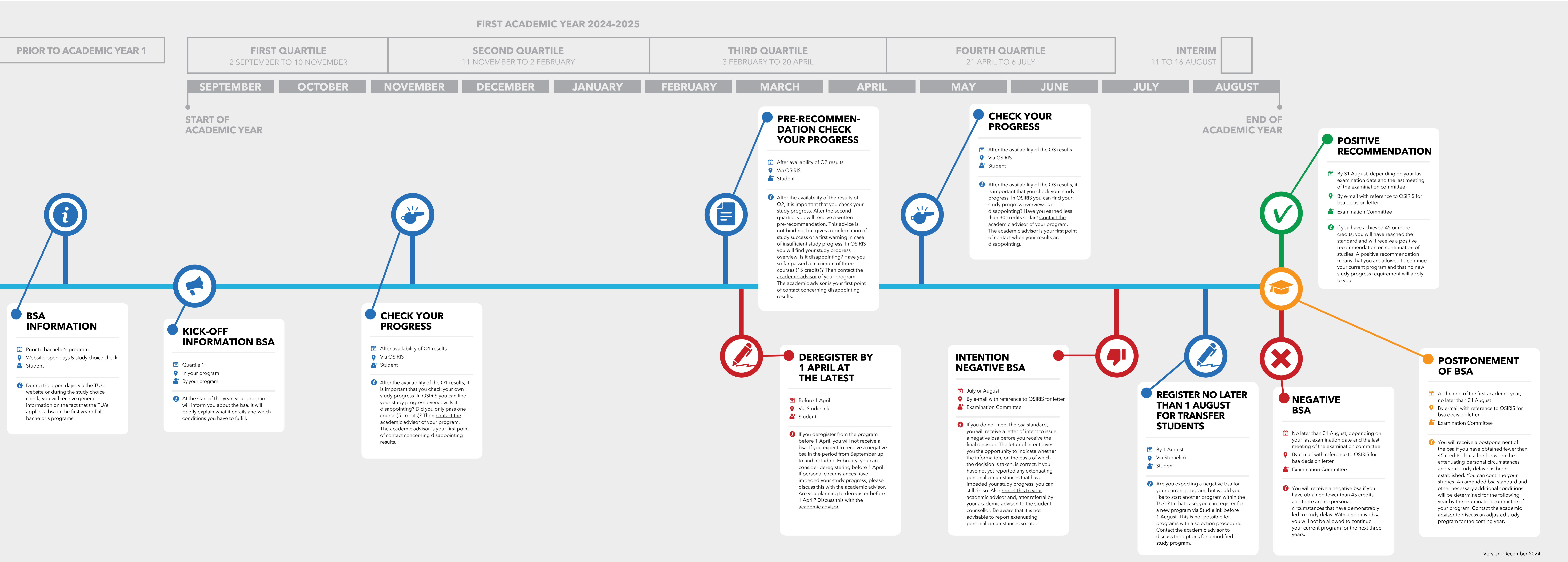


# BINDING RECOMMENDATION ON THE CONTINUATION OF STUDIES (BSA) FOR GENERATION 2024-2025

At the end of the first year of your bachelor's program at TU/e, you will receive a binding recommendation on the continuation of studies (bsa). In the first year of your bachelor's program, you must obtain at least 45 of the 60 credits. If you earn less than 45 credits, you will receive a negative bsa. In this case, you will not be able to enroll in the same program for the next three years. If, due to extenuating personal circumstances, you will (possibly) not achieve the bsa standard, you must report this to your academic advisor as soon as possible (within 20 working days). You will then start the track 'extenuating personal circumstances' bsa.



# EXTENUATING PERSONAL CIRCUMSTANCES BINDING RECOMMENDATION ON THE CONTINUATION OF STUDIES (BSA) FOR GENERATION 2024-2025

If extenuating personal circumstances (possibly) affect your study progress, you can expect the best possible support and guidance from the TU/e. Together we will ensure that any delays are kept to a minimum. Your first point of contact is the academic advisor of your program. The academic advisor will meet with you to assess the situation and to discuss the next steps.

